

MetaCast Pumps

MTP Series Pumps for Molten Aluminum Transfer

METACAST ALUMINUM PRODUCT LISTING

MOLTEN METAL HANDLING:

CIRCULATING AND DEGASING
PUMPS
PUMPING SYSTEM DESIGNED FOR
PERMANENT MOLD, SAND FOUN-
DRIES AND HPD CASTING
LARGE VOLUME TRANSFER

MELTING SYSTEMS:

ELECTRIC CRUCIBLE AND BATH
FURNACES
GAS FIRED CRUCIBLE AND BATH
FURNACES
HOLDING FURNACES
MAGNESIUM MELTING FURNACES
ZINC MELTING FURNACES

THERMAL SYSTEMS:

CUSTOM THERMAL CONTROL S
FEED FORWARD LOGIC CON-
TROLS



Versatile Pumping System

The MetaCast pumping system is designed for accurate metal metering. It's capabilities include high pressure die casting applications, ideal for sand mold and permanent mold. The MetaCast transfer pumps are equipped with controls that guaranty repeatability shot after shot. The MetaCast Pumps are manufactured by Metamag the world renowned magnesium pump manufacturers. Metamag has more than 25 years of molten metal handling experience, we are certain the MetaCast Pumps will meet or exceed your requirements. It's simple design is a break thought in molten aluminum transfer with minimum part in contact with the molten aluminum it insure durability and superior performance. The pump also



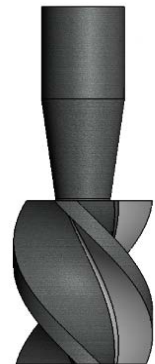
MetaCast Transfer Pump MTP Series Pumps for Molten Aluminum

Transfer Pump Performance

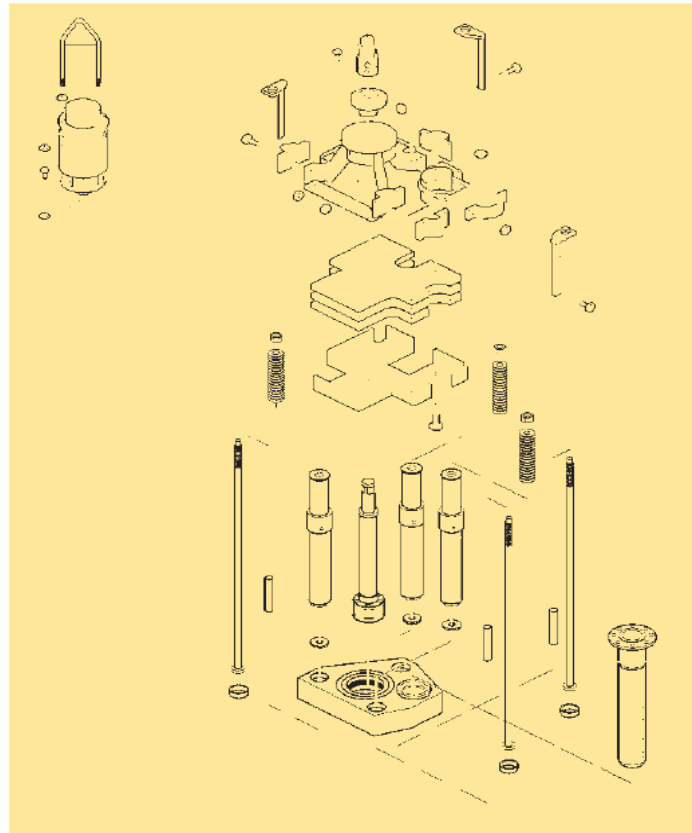
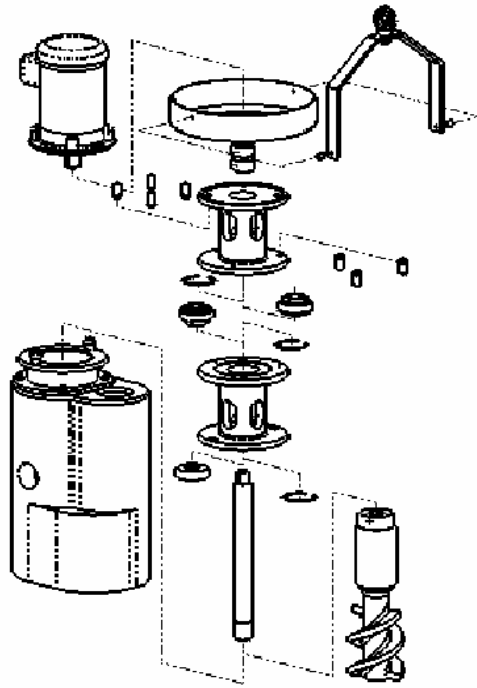
PUMP SPEED	20 HERTZ	25 HERTZ	30 HERTZ	40 HERTZ
METAL TRANSFER KG/SEC	2.5	4.25	6.75	8.25

Design Features:

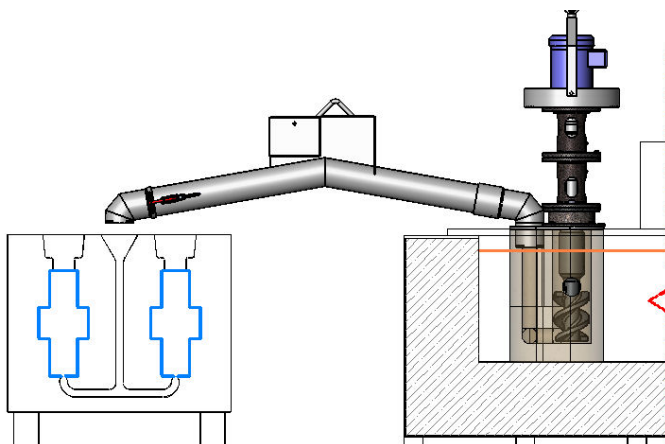
- Repeatability from shot to shot ideal for HPDC
- Replacement for ladle transfer
- Greatly reduces transfer cycle time
- No heat loss during transfer therefore the furnace can be operate at lower temperatures
- Replacement for Dosing Transfer systems
- Ideal for transfer from furnace to furnace or to transport ladle
- The pump body is a one piece construction using proprietary high strength, high temperature bonded refractory with ceramic infusion
- The pump rotor assembly is mounted on a heavy stable steel plate anchored in the refractory body.
- The pump body has 2 inlets for better displacement
- Inlet ports can also be used to circulate the bath in between pours
- Graphite Helix displacement shaft can be removed without disturbing pump body in the melt
- Friction free moving parts under the molten metal surface
- Refractory line transfer tube can also be removed without disturbing the submerged pump body
- Can be a replacement for tilting furnaces



HOW WE COMPARE



MetaCast Transfer Pump



Competitor's Transfer Pump

can have as many as 12 pump component submerged in the molten bath

MetaCast Pumps are easily replaced
With only 2 pump parts in contact with the molten aluminum this makes is the easiest pump to get back up in production.
The durable pump body does not need to be pulled out of the bath over shutdown periods.