

**METACAST ALUMNUM  
PRODUCT LISTING**

**MOLTEN METAL  
HANDLING:**

CIRCULATING AND DEGASING  
PUMPS  
PUMPING SYSTEM DESIGNED FOR  
PERMANENT MOLD ,SAND FOUN-  
DRIES AND HPD CASTING  
LARGE VOLUME TRANSFER

**MELTING SYSTEMS:**

ELECTRIC CRUCIBLE AND BATH  
FURNACES  
GAS FIRED CRUCIBLE AND BATH  
FURNACES  
HOLDING FURNACES  
MAGNESIUM MELTING FURNACES  
ZINC MELTING FURNACES

**THERMAL SYSTEMS:**

CUSTOM THERMAL CONTROL S  
FEED FORWARD LOGIC CON-  
TROLS

# METACAST MCP Series Pumps For Circulating/Degassing Molten Aluminum

## A New Alternative

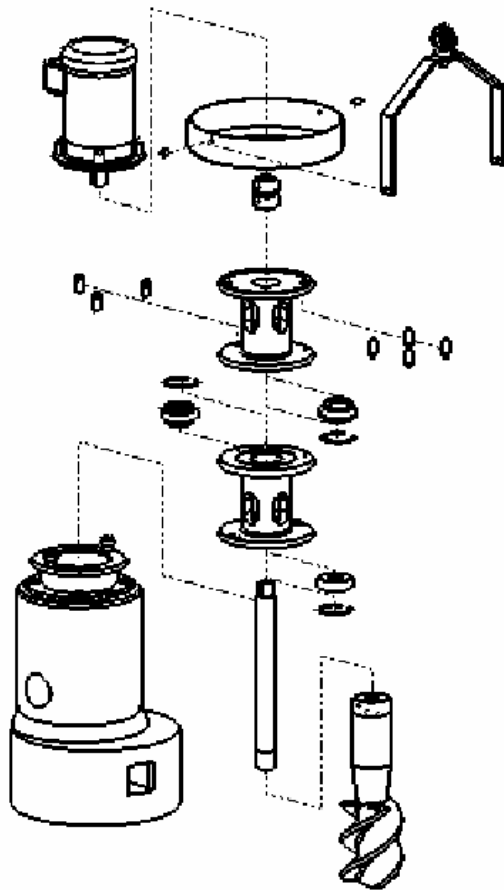


Most circulating pump manufacturers build the same 3 post support system in their pump assemblies. This can add as many as 12 components that are in direct contact with the molten metal.

The MCP Circulating Pump has only 2 components in contact with the metal. METACAST is the aluminum division of Metamag with more than 20 years of experience we have become the world leader in manufacturing Magnesium Pumping Systems . The design of the MCP is a clear indication that all these years of development were put to good use. The MCP Circulating Pumps offer a breakthrough in design and efficiency with minimal assembly components. The MCP Circulating Pump is a complete departure from conventional mechanical pumps available today. With only two component in direct contact with the molten metal, this makes it the most trouble free pump available. It is well known fact that circulating a molten aluminum bath has great benefits to the quality of the melt and the casted parts and also shows to be an energy saver. And by adding degassing this eliminates the problematic hydrogen formation within the melt.

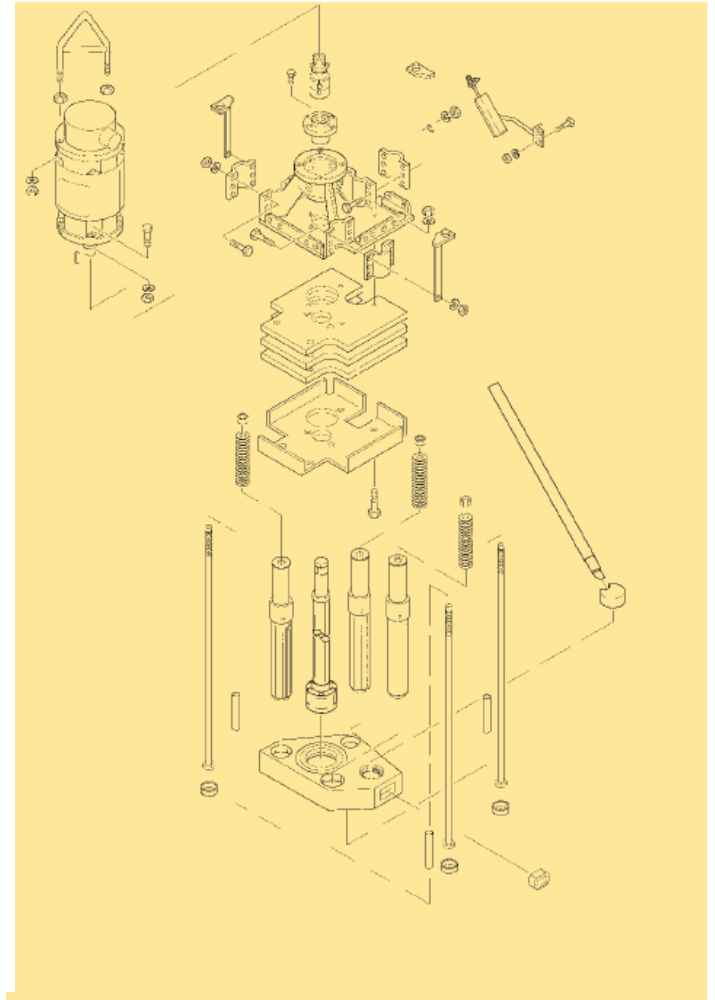


# How we Compare



**METACAST**

**With only 2 components in direct contact with the molten aluminum**



**LEADING COMPETITOR**

**Complicated construction with as many as 12 components submerged into the molten aluminum**

# METACAST MCP Series Pumps

## For Circulating/Degassing Molten Aluminum

### Pump Flow Rate

Model	Flow Rate in Hertz	
	KG/MIN	HERTZ
MCP-1000	1000	20
MCP-2620	2600	20
MCP-6225	6200	25

### Electric Motor Size

	Horse Power	Voltage
MCP-1000	2	110/240 single phase
MCP-2620	3	600/480/400 3 phase
MCP-6225	7	600/480/400 3 phase

### Pump Dimensions

	Diameter	Height top to bottom
MCP-1000	330 mm	1200 mm
MCP-2620	420 mm	1370 mm
MCP-6225	490 mm	1450 mm

### Bath Dept

	Minimum	Furnace Capacity
MCP-1000	200 mm	Up to 3,000 kg
MCP-2620	200 mm	Up to 18,200 kg
MCP-6225	200 mm	Up to 36,00 kg

#### TECHNICAL SUPPORT

METACAST IS LO-  
CATED IN ONTARIO  
CANADA  
SERVICING THE USA  
MARKET FOR OVER 30  
YEARS

[insidesales@metamag.com](mailto:insidesales@metamag.com)

TEL: 1 519 245 0404

FAX: 1 519 245 4306

#### REGIONAL SUPPORT

##### ONTARIO:

CRAFT CAST

MIKE JURCIC

905 299 7677

[craftcast@cogeco.ca](mailto:craftcast@cogeco.ca)

##### MICHIGAN, OHIO,

##### INDIANA, ILLINOIS:

##### PENNSYLVANIA:

#### FOR MORE

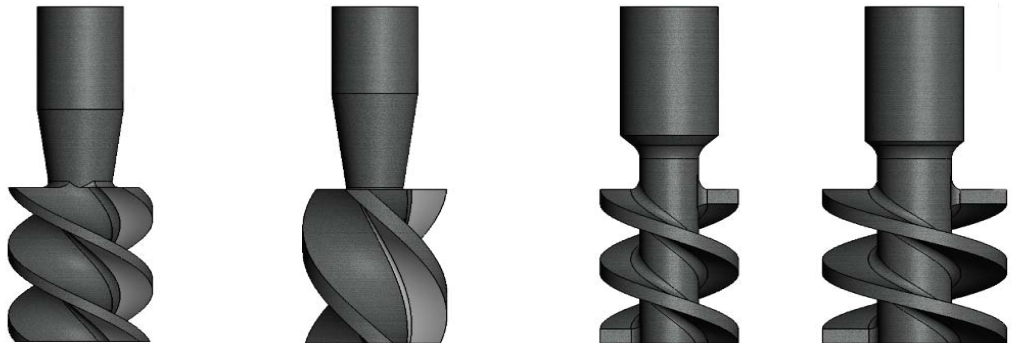
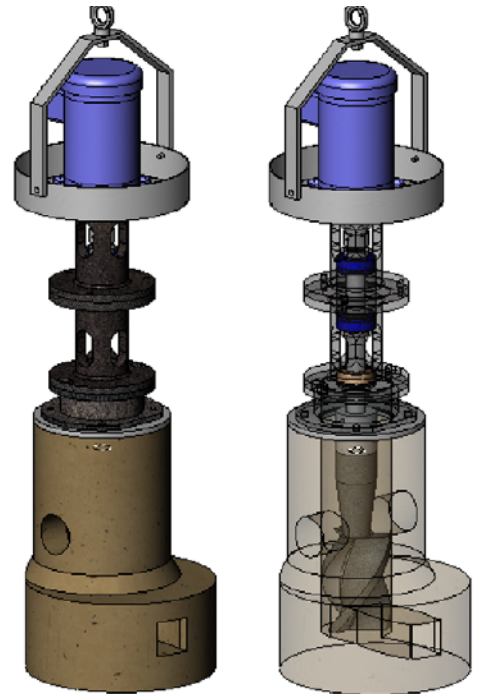
#### MELTING SOLUTIONS

visit us on the Web at:

[www.metacast.com](http://www.metacast.com)

## Breakthrough Design

- Pump body is a one piece construction
- No touching components under the surface
- Proprietary high strength, high temperature ceramic base refractory
- Pump assembly mounting plate is made of heavy steel sections anchored to the pump refractory body
- Helix displacement assembly can be removed without removing the body from the molten bath
- Double intakes for better circulation
- Double bearing casting assembly for "True Alignment" system, with vibration free operation
- Steel drive shaft for durability and reduced vibration
- Heavy Duty vector drive motor
- Lifting assembly and heat deflector shroud
- Degassing lance attachment
- Four Helix configurations to fit varied processes



770 WRIGHT ST  
STRATHROY ONTARIO  
CANADA N7G 3H8  
Phone 519-245-0404